

# HONGXIU CLOTHING PRODUCT CATALOG

2026.03 General v3



HONGXIU CLOTHING  
YOUR TRUSTED  
SWIMWEAR MANUFACTURER PARTNER

WEARHONGXIU.COM

## ADDRESS

10-8A, Tiexi Rd., Ningyuan St.,  
Xingcheng, LiaoNing, China

## CONTACT

+86 177-1101-4152  
service@wearhongxiu.com

## SOCIAL MEDIA

LinkedIn / Facebook / Tiktok  
@wearhongxiu

# ABOUT US

Established in 2016, Hongxiu Clothing is a leading swimwear manufacturer based in Xingcheng, China — the world's renowned swimwear hub. Operating three dedicated factories with state-of-the-art technology, our team of over 100 professionals specializes in end-to-end production. With a monthly capacity of over 100,000 pieces, we leverage a robust supply chain to deliver high-quality products with exceptional speed and efficiency.

As your trusted global partner for OEM and ODM manufacturing, our mission is to bring your creative visions from concept to reality. We strive for excellence and precision in every detail, combining innovative customization with reliable execution. Through seamless manufacturing solutions and dedicated service, we empower your brand to succeed and grow in a competitive market.

# OUR PROCESS



## DESIGN & STYLE (OEM/ODM)

Share your tech packs for OEM, or choose our ready designs for ODM. We'll finalize fabrics and details.



## BULK PRODUCTION

Once samples are approved, we proceed with bulk production, ensuring premium craftsmanship and efficient timelines.



## SAMPLE DEVELOPMENT

We create physical samples based on your requirements for your review, fitting, and final approval.



## QC & DELIVERY

Every piece undergoes strict quality inspection before being securely packaged and shipped to your destination.

# TABLE CONTENT

Explore our diverse range of premium swimwear and beachwear. From trend-setting designs to inclusive sizing, we offer flexible OEM & ODM manufacturing solutions tailored to bring your brand's vision to life with superior craftsmanship.

## Bikini Collection

Trendy two-piece sets featuring customizable cuts, premium stretch fabrics, and vibrant, fade-resistant prints.

1-10  
PAGE

## One-Piece Collection

Elegant and flattering silhouettes offering superior support, comfort, and seamless construction for all body types.

11-16  
PAGE

## Curve & Plus Size

Expertly tailored for comfort and confidence, featuring supportive structures and inclusive sizing options.

17-20  
PAGE

## Kids' Swimwear

Playful, durable, and UPF-protective designs crafted to ensure maximum comfort and safety for children.

21-24  
PAGE

## Resort & Cover-Ups

Lightweight and stylish transition pieces made from breathable fabrics, perfect for beach-to-street styling.

25-26  
PAGE

## Men's Swimwear

High-performance trunks and boardshorts engineered with quick-dry technology and comfortable inner linings.

27-28  
PAGE

# BIKINIS



**SWBK260301**  
Gilded Link Halter

Fabric: 82% Nylon, 18% Spandex  
MOQ: 100 Sets / Color

SIZE: US XS - XL [View More](#)



**SWBK260302**  
Smocked Tassel Bandeau

Fabric: 82% Nylon, 18% Spandex  
MOQ: 100 Sets / Color

SIZE: US XS - XL [View More](#)



**SWBK260303**  
Tortoise Ring Halter

Fabric: 82% Nylon, 18% Spandex  
MOQ: 100 Sets / Color

SIZE: US XS - XL [View More](#)



**SWBK260304**  
Essential Sculpt Underwire

Fabric: 82% Nylon, 18% Spandex  
MOQ: 100 Sets / Color

SIZE: US XS - XL [View More](#)



**SWBK260305**  
Island Botanical Bandeau

Fabric: 82% Nylon, 18% Spandex  
MOQ: 100 Sets / Color

SIZE: US XS - XL [View More](#)



**SWBK260306**  
Ribbed Tie-Dye Swimsuit

Fabric: 82% Nylon, 18% Spandex  
MOQ: 100 Sets / Color

SIZE: US XS - XL [View More](#)



# BIKINIS



**SWBK260307**  
Textured Triangle Bikini

Fabric: 82% Nylon, 18% Spandex  
MOQ: 100 Sets / Color

SIZE: US XS - XL [View More](#)



**SWBK260308**  
Graphic Print Halter Set

Fabric: 82% Nylon, 18% Spandex  
MOQ: 100 Sets / Color

SIZE: US XS - XL [View More](#)



**SWBK260309**  
Retro Linear Print Bikini

Fabric: 82% Nylon, 18% Spandex  
MOQ: 100 Sets / Color

SIZE: US XS - XL [View More](#)



**SWBK260313**  
Braided Macramé Halter Set

Fabric: 82% Nylon, 18% Spandex  
MOQ: 100 Sets / Color

SIZE: US XS - XL [View More](#)



**SWBK260314**  
Paisley Mixed Pattern Bikini

Fabric: 82% Nylon, 18% Spandex  
MOQ: 100 Sets / Color

SIZE: US XS - XL [View More](#)



**SWBK260315**  
Keyhole Twist Bandeau Set

Fabric: 82% Nylon, 18% Spandex  
MOQ: 100 Sets / Color

SIZE: US XS - XL [View More](#)



**SWBK260310**  
Boho Shell Fringe Set

Fabric: 82% Nylon, 18% Spandex  
MOQ: 100 Sets / Color

SIZE: US XS - XL [View More](#)



**SWBK260311**  
3D Rosette Floral Bikini

Fabric: 82% Nylon, 18% Spandex  
MOQ: 100 Sets / Color

SIZE: US XS - XL [View More](#)



**SWBK260312**  
Studded Eyelet Texture Bikini

Fabric: 82% Nylon, 18% Spandex  
MOQ: 100 Sets / Color

SIZE: US XS - XL [View More](#)



**SWBK260316**  
Gilded Ring Ruched Bandeau

Fabric: 82% Nylon, 18% Spandex  
MOQ: 100 Sets / Color

SIZE: US XS - XL [View More](#)



**SWBK260317**  
Holographic Cutout One Shoulder

Fabric: 82% Nylon, 18% Spandex  
MOQ: 100 Sets / Color

SIZE: US XS - XL [View More](#)



**SWBK260318**  
Timeless Side-Tie Bikini

Fabric: 82% Nylon, 18% Spandex  
MOQ: 100 Sets / Color

SIZE: US XS - XL [View More](#)

# BIKINIS



**SWBK260319**  
Ribbed Underwire Bikini Set

Fabric: 82% Nylon, 18% Spandex  
MOQ: 100 Sets / Color

SIZE: US XS - XL [View More](#)



**SWBK260320**  
Color-Block Underwire Set

Fabric: 82% Nylon, 18% Spandex  
MOQ: 100 Sets / Color

SIZE: US XS - XL [View More](#)



**SWBK260321**  
Crochet Knit Halter Bikini

Fabric: 82% Nylon, 18% Spandex  
MOQ: 100 Sets / Color

SIZE: US XS - XL [View More](#)



**SWBK260325**  
Tiered Ruffle Dot Set

Fabric: 82% Nylon, 18% Spandex  
MOQ: 100 Sets / Color

SIZE: US XS - XL [View More](#)



**SWBK260326**  
Metallic Cutout Strappy Set

Fabric: 82% Nylon, 18% Spandex  
MOQ: 100 Sets / Color

SIZE: US XS - XL [View More](#)



**SWBK260327**  
Asymmetric Floral Mixed Bikini

Fabric: 82% Nylon, 18% Spandex  
MOQ: 100 Sets / Color

SIZE: US XS - XL [View More](#)



**SWBK260322**  
Metallic U-Bar Ruched Set

Fabric: 82% Nylon, 18% Spandex  
MOQ: 100 Sets / Color

SIZE: US XS - XL [View More](#)



**SWBK260323**  
Botanical Wide-Strap Set

Fabric: 82% Nylon, 18% Spandex  
MOQ: 100 Sets / Color

SIZE: US XS - XL [View More](#)



**SWBK260324**  
Metallic Zigzag Band Set

Fabric: 82% Nylon, 18% Spandex  
MOQ: 100 Sets / Color

SIZE: US XS - XL [View More](#)



**SWBK260328**  
Modern V-Strap Set

Fabric: 82% Nylon, 18% Spandex  
MOQ: 100 Sets / Color

SIZE: US XS - XL [View More](#)



**SWBK260329**  
Linear Banded Halter Set

Fabric: 82% Nylon, 18% Spandex  
MOQ: 100 Sets / Color

SIZE: US XS - XL [View More](#)



**SWBK260330**  
Striped Contrast Waistband Bikini

Fabric: 82% Nylon, 18% Spandex  
MOQ: 100 Sets / Color

SIZE: US XS - XL [View More](#)



## BIKINIS



**SWBK260331**  
Scalloped Pointelle Tie Bikini

Fabric: 82% Nylon, 18% Spandex  
MOQ: 100 Sets / Color

SIZE: US XS - XL [View More](#)



**SWBK260332**  
Sequin Animal Hardware Set

Fabric: 82% Nylon, 18% Spandex  
MOQ: 100 Sets / Color

SIZE: US XS - XL [View More](#)



**SWBK260333**  
Checked Star Appliqué Set

Fabric: 82% Nylon, 18% Spandex  
MOQ: 100 Sets / Color

SIZE: US XS - XL [View More](#)



**SWBK260334**  
Star Print Camouflage Set

Fabric: 82% Nylon, 18% Spandex  
MOQ: 100 Sets / Color

SIZE: US XS - XL [View More](#)



**SWBK260335**  
Coastal Cowrie Detail Set

Fabric: 82% Nylon, 18% Spandex  
MOQ: 100 Sets / Color

SIZE: US XS - XL [View More](#)



**SWBK260336**  
Studded Leopard Halter Bikini

Fabric: 82% Nylon, 18% Spandex  
MOQ: 100 Sets / Color

SIZE: US XS - XL [View More](#)

# BIKINIS



**SWBK260337**  
Eyelet Accent String Set

Fabric: 82% Nylon, 18% Spandex  
MOQ: 100 Sets / Color

SIZE: US XS - XL [View More](#)



**SWBK260338**  
Faux Fur Leopard Set

Fabric: 82% Nylon, 18% Spandex  
MOQ: 100 Sets / Color

SIZE: US XS - XL [View More](#)



**SWBK260339**  
Metallic Ring Halter Set

Fabric: 82% Nylon, 18% Spandex  
MOQ: 100 Sets / Color

SIZE: US XS - XL [View More](#)



**SWBK260343**  
Frill Trimmed Bralette Bikini

Fabric: 82% Nylon, 18% Spandex  
MOQ: 100 Sets / Color

SIZE: US XS - XL [View More](#)



**SWBK260344**  
Ornate Metallic Ring Halter

Fabric: 82% Nylon, 18% Spandex  
MOQ: 100 Sets / Color

SIZE: US XS - XL [View More](#)



**SWBK260345**  
Floral Charm Tie-Front Set

Fabric: 82% Nylon, 18% Spandex  
MOQ: 100 Sets / Color

SIZE: US XS - XL [View More](#)



**SWBK260340**  
Zigzag Trim Paisley Set

Fabric: 82% Nylon, 18% Spandex  
MOQ: 100 Sets / Color

SIZE: US XS - XL [View More](#)



**SWBK260341**  
Oceanic Star Strapless Bikini

Fabric: 82% Nylon, 18% Spandex  
MOQ: 100 Sets / Color

SIZE: US XS - XL [View More](#)



**SWBK260342**  
Layered Polka Dot Set

Fabric: 82% Nylon, 18% Spandex  
MOQ: 100 Sets / Color

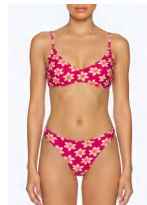
SIZE: US XS - XL [View More](#)



**SWBK260346**  
Petal Detail String Bikini

Fabric: 82% Nylon, 18% Spandex  
MOQ: 100 Sets / Color

SIZE: US XS - XL [View More](#)



**SWBK260347**  
Tropical Flora Scoop Set

Fabric: 82% Nylon, 18% Spandex  
MOQ: 100 Sets / Color

SIZE: US XS - XL [View More](#)



**SWBK260348**  
Ruched Underwire Balconette Set

Fabric: 82% Nylon, 18% Spandex  
MOQ: 100 Sets / Color

SIZE: US XS - XL [View More](#)

## ONE-PIECES



**SWOP260301**  
Botanical Panel One-Piece

Fabric: 82% Nylon, 18% Spandex  
MOQ: 100 Sets / Color

SIZE: US XS - XL [View More](#)



**SWOP260302**  
Banded Net Detail Swimsuit

Fabric: 82% Nylon, 18% Spandex  
MOQ: 100 Sets / Color

SIZE: US XS - XL [View More](#)



**SWOP260303**  
High Neck Ruched One-Piece

Fabric: 82% Nylon, 18% Spandex  
MOQ: 100 Sets / Color

SIZE: US XS - XL [View More](#)



**SWOP260304**  
3D Petal Bloom Monokini

Fabric: 82% Nylon, 18% Spandex  
MOQ: 100 Sets / Color

SIZE: US XS - XL [View More](#)



**SWOP260305**  
Embroidered Trim Ring Suit

Fabric: 82% Nylon, 18% Spandex  
MOQ: 100 Sets / Color

SIZE: US XS - XL [View More](#)



**SWOP260306**  
Jacquard Cutout Tassel Suit

Fabric: 82% Nylon, 18% Spandex  
MOQ: 100 Sets / Color

SIZE: US XS - XL [View More](#)



# ONE-PIECES



## SWOP260307

Modern Geometric One-Piece

Fabric: 82% Nylon, 18% Spandex  
MOQ: 100 Sets / Color

SIZE: US XS - XL [View More](#)



## SWOP260308

Asymmetric Cutout One-Piece

Fabric: 82% Nylon, 18% Spandex  
MOQ: 100 Sets / Color

SIZE: US XS - XL [View More](#)



## SWOP260309

Ruffled One-Shoulder Print Suit

Fabric: 82% Nylon, 18% Spandex  
MOQ: 100 Sets / Color

SIZE: US XS - XL [View More](#)



## SWOP260313

Glistening Scalloped Monokini

Fabric: 82% Nylon, 18% Spandex  
MOQ: 100 Sets / Color

SIZE: US XS - XL [View More](#)

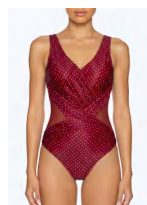


## SWOP260314

Ruffled Gingham Cutout Monokini

Fabric: 82% Nylon, 18% Spandex  
MOQ: 100 Sets / Color

SIZE: US XS - XL [View More](#)



## SWOP260315

Mesh Wrap Polka Swimsuit

Fabric: 82% Nylon, 18% Spandex  
MOQ: 100 Sets / Color

SIZE: US XS - XL [View More](#)



## SWOP260310

Metallic Belted One-Piece

Fabric: 82% Nylon, 18% Spandex  
MOQ: 100 Sets / Color

SIZE: US XS - XL [View More](#)



## SWOP260311

One-Shoulder Striped Flounce

Fabric: 82% Nylon, 18% Spandex  
MOQ: 100 Sets / Color

SIZE: US XS - XL [View More](#)



## SWOP260312

Jeweled Plunge Cascade Suit

Fabric: 82% Nylon, 18% Spandex  
MOQ: 100 Sets / Color

SIZE: US XS - XL [View More](#)



## SWOP260316

Jeweled Palm Chain Suit

Fabric: 82% Nylon, 18% Spandex  
MOQ: 100 Sets / Color

SIZE: US XS - XL [View More](#)



## SWOP260317

Exotic Print V-Neck Suit

Fabric: 82% Nylon, 18% Spandex  
MOQ: 100 Sets / Color

SIZE: US XS - XL [View More](#)



## SWOP260318

Asymmetric Mesh Inset One-Piece

Fabric: 82% Nylon, 18% Spandex  
MOQ: 100 Sets / Color

SIZE: US XS - XL [View More](#)

# ONE-PIECES



**SWOP260319**  
Petal Print Steek Swimsuit

Fabric: 82% Nylon, 18% Spandex  
MOQ: 100 Sets / Color

SIZE: US XS - XL [View More](#)



**SWOP260320**  
Flounce Neckline Side-Tie Suit

Fabric: 82% Nylon, 18% Spandex  
MOQ: 100 Sets / Color

SIZE: US XS - XL [View More](#)



**SWOP260321**  
Corset Lace-Up One-Piece

Fabric: 82% Nylon, 18% Spandex  
MOQ: 100 Sets / Color

SIZE: US XS - XL [View More](#)



**SWOP260325**  
Lattice Waist Halter One-Piece

Fabric: 82% Nylon, 18% Spandex  
MOQ: 100 Sets / Color

SIZE: US XS - XL [View More](#)



**SWOP260326**  
Belted Plunge Swimsuit

Fabric: 82% Nylon, 18% Spandex  
MOQ: 100 Sets / Color

SIZE: US XS - XL [View More](#)



**SWOP260327**  
Nautical Striped Bandeau Suit

Fabric: 82% Nylon, 18% Spandex  
MOQ: 100 Sets / Color

SIZE: US XS - XL [View More](#)



**SWOP260322**  
Minimalist High-Leg Swimsuit

Fabric: 82% Nylon, 18% Spandex  
MOQ: 100 Sets / Color

SIZE: US XS - XL [View More](#)



**SWOP260323**  
Deep V Cross-Over Monokini

Fabric: 82% Nylon, 18% Spandex  
MOQ: 100 Sets / Color

SIZE: US XS - XL [View More](#)



**SWOP260324**  
Nautical Striped Double-Strap Suit

Fabric: 82% Nylon, 18% Spandex  
MOQ: 100 Sets / Color

SIZE: US XS - XL [View More](#)



**SWOP260328**  
Paisley Cutout Halter Suit

Fabric: 82% Nylon, 18% Spandex  
MOQ: 100 Sets / Color

SIZE: US XS - XL [View More](#)



**SWOP260329**  
Multi-Strap Halter One-Piece

Fabric: 82% Nylon, 18% Spandex  
MOQ: 100 Sets / Color

SIZE: US XS - XL [View More](#)



**SWOP260330**  
Tropical Plunge One-Piece Suit

Fabric: 82% Nylon, 18% Spandex  
MOQ: 100 Sets / Color

SIZE: US XS - XL [View More](#)



## PLUS SIZE



**SWPL260301**  
Tiered Tropical Flounce Tankini

Fabric: 85% Polyester, 15% Spandex  
MOQ: 100 Sets / Color

SIZE: US 12 - 20 [View More](#)



**SWPL260302**  
Abstract Ring Detail Tankini

Fabric: 85% Polyester, 15% Spandex  
MOQ: 100 Sets / Color

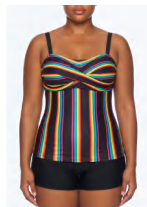
SIZE: US 12 - 20 [View More](#)



**SWPL260303**  
Textured Handkerchief Tie Tankini

Fabric: 85% Polyester, 15% Spandex  
MOQ: 100 Sets / Color

SIZE: US 12 - 20 [View More](#)



**SWPL260304**  
Prismatic Stripe Twist Tankini

Fabric: 85% Polyester, 15% Spandex  
MOQ: 100 Sets / Color

SIZE: US 12 - 20 [View More](#)



**SWPL260305**  
Classic Paisley Print Tankini Set

Fabric: 85% Polyester, 15% Spandex  
MOQ: 100 Sets / Color

SIZE: US 12 - 20 [View More](#)



**SWPL260306**  
Tropical Palm Mesh Flyaway Tankini

Fabric: 85% Polyester, 15% Spandex  
MOQ: 100 Sets / Color

SIZE: US 12 - 20 [View More](#)

# PLUS SIZE



**SWPL260307**  
Nautical Stripe Skirtini Set

Fabric: 85% Polyester, 15% Spandex  
MOQ: 100 Sets / Color

SIZE: US 12 - 20 [View More](#)



**SWPL260308**  
Geometric Sunburst Halter Tankini

Fabric: 85% Polyester, 15% Spandex  
MOQ: 100 Sets / Color

SIZE: US 12 - 20 [View More](#)



**SWPL260309**  
Marble Swirl Slit Skirtini

Fabric: 85% Polyester, 15% Spandex  
MOQ: 100 Sets / Color

SIZE: US 12 - 20 [View More](#)



**SWPL260313**  
Flowy High Neck Keyhole Set

Fabric: 82% Nylon, 18% Spandex  
MOQ: 100 Sets / Color

SIZE: US 12 - 20 [View More](#)



**SWPL260314**  
Scoop Neck Blouson Tankini

Fabric: 82% Nylon, 18% Spandex  
MOQ: 100 Sets / Color

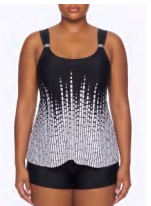
SIZE: US 12 - 20 [View More](#)



**SWPL260315**  
Floral Trim Pleated Tankini

Fabric: 82% Nylon, 18% Spandex  
MOQ: 100 Sets / Color

SIZE: US 12 - 20 [View More](#)



**SWPL260310**  
Urban Pixel Tankini

Fabric: 85% Polyester, 15% Spandex  
MOQ: 100 Sets / Color

SIZE: US 12 - 20 [View More](#)



**SWPL260311**  
Tribal Asymmetry Tankini

Fabric: 85% Polyester, 15% Spandex  
MOQ: 100 Sets / Color

SIZE: US 12 - 20 [View More](#)



**SWPL260312**  
Cascading Layer Mesh Tankini

Fabric: 82% Nylon, 18% Spandex  
MOQ: 100 Sets / Color

SIZE: US 12 - 20 [View More](#)



**SWPL260316**  
Off-Shoulder Sunflower Ruffle

Fabric: 85% Polyester, 15% Spandex  
MOQ: 100 Sets / Color

SIZE: US 12 - 20 [View More](#)



**SWPL260317**  
Tiered Ruffle Polka Dot One-Piece

Fabric: 85% Polyester, 15% Spandex  
MOQ: 100 Sets / Color

SIZE: US 12 - 20 [View More](#)



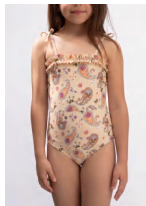
**SWPL260318**  
Tropical Plunge Neck Floral One-Piece

Fabric: 85% Polyester, 15% Spandex  
MOQ: 100 Sets / Color

SIZE: US 12 - 20 [View More](#)



## KIDS' SWIM



**SKG260301**  
Boho Paisley Ruffled Swimsuit

Fabric: 82% Nylon, 18% Spandex  
MOQ: 300 Sets / Color

SIZE: 3 - 12Y

[View More](#)



**SKG260302**  
Palm Leaf One-Shoulder Swimsuit

Fabric: 82% Nylon, 18% Spandex  
MOQ: 300 Sets / Color

SIZE: 3 - 12Y

[View More](#)

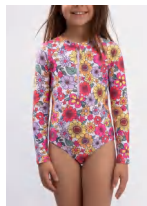


**SKG260303**  
Cute Bear Strappy Two-Piece

Fabric: 82% Nylon, 18% Spandex  
MOQ: 300 Sets / Color

SIZE: 3 - 12Y

[View More](#)



**SKG260304**  
Long Sleeve Floral Rash Guard

Fabric: 82% Nylon, 18% Spandex  
MOQ: 300 Sets / Color

SIZE: 3 - 12Y

[View More](#)



**SKG260305**  
Classic Striped Tank One-Piece

Fabric: 82% Nylon, 18% Spandex  
MOQ: 300 Sets / Color

SIZE: 3 - 12Y

[View More](#)



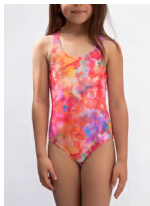
**SKG260306**  
Mermaid Scale Ruffle Swimsuit

Fabric: 82% Nylon, 18% Spandex  
MOQ: 300 Sets / Color

SIZE: 3 - 12Y

[View More](#)

# KIDS' SWIM



**SKG260307**  
Gilded Link Halter

Fabric: 82% Nylon, 18% Spandex  
MOQ: 300 Sets / Color

SIZE: 3 - 12Y

[View More](#)



**SKG260308**  
Ribbed Shimmer Band Bikini

Fabric: 82% Nylon, 18% Spandex  
MOQ: 300 Sets / Color

SIZE: 3 - 12Y

[View More](#)



**SKG260309**  
Double Strap Smocked Swimsuit

Fabric: 82% Nylon, 18% Spandex  
MOQ: 300 Sets / Color

SIZE: 3 - 12Y

[View More](#)



**SKG260313**  
Gilded Link Halter

Fabric: 82% Nylon, 18% Spandex  
MOQ: 300 Sets / Color

SIZE: 3 - 12Y

[View More](#)



**SKG260314**  
California Gradient Sporty Bikini

Fabric: 82% Nylon, 18% Spandex  
MOQ: 300 Sets / Color

SIZE: 3 - 12Y

[View More](#)



**SKG260315**  
Botanical Berry One-Piece

Fabric: 82% Nylon, 18% Spandex  
MOQ: 300 Sets / Color

SIZE: 3 - 12Y

[View More](#)

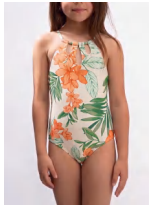


**SKG260310**  
Fantasy Print Short Sleeve Set

Fabric: 82% Nylon, 18% Spandex  
MOQ: 300 Sets / Color

SIZE: 3 - 12Y

[View More](#)



**SKG260311**  
Tropical Cut-Out Halter One-Piece

Fabric: 82% Nylon, 18% Spandex  
MOQ: 300 Sets / Color

SIZE: 3 - 12Y

[View More](#)



**SKG260312**  
Animal Kingdom Ribbon Swimsuit

Fabric: 82% Nylon, 18% Spandex  
MOQ: 300 Sets / Color

SIZE: 3 - 12Y

[View More](#)

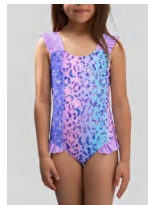


**SKG260316**  
Celestial Unicorn Print One-Piece

Fabric: 82% Nylon, 18% Spandex  
MOQ: 300 Sets / Color

SIZE: 3 - 12Y

[View More](#)



**SKG260317**  
Glitter Animal Print Frill Swimsuit

Fabric: 82% Nylon, 18% Spandex  
MOQ: 300 Sets / Color

SIZE: 3 - 12Y

[View More](#)



**SKG260318**  
Sporty Striped Tankini Set

Fabric: 82% Nylon, 18% Spandex  
MOQ: 300 Sets / Color

SIZE: 3 - 12Y

[View More](#)



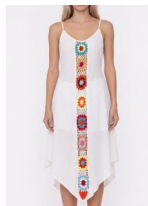
## COVER-UPS



**CU260301**  
Long Sleeve Crochet Cover-Up

Fabric: 100% Polyester  
MOQ: 300 Sets / Color

SIZE: One size [View More](#)



**CU260302**  
Boho Floral Inset Midi

Fabric: 100% Polyester  
MOQ: 300 Sets / Color

SIZE: One size [View More](#)



**CU260303**  
Tassel Hem Knit Set

Fabric: 100% Polyester  
MOQ: 300 Sets / Color

SIZE: One size [View More](#)



**CU260304**  
V-Neck Flounce Hem Tunic

Fabric: 100% Polyester  
MOQ: 300 Sets / Color

SIZE: One size [View More](#)



**CU260305**  
Collared Sheer Shirt Dress

Fabric: 100% Polyester  
MOQ: 300 Sets / Color

SIZE: One size [View More](#)



**CU260306**  
Floral Lace Button-Down Tunic

Fabric: 100% Polyester  
MOQ: 300 Sets / Color

SIZE: One size [View More](#)

## MEN'S SWIM



**SMT260301**  
Anchor Pattern Nautical Trunks

Fabric: 100% Polyester  
MOQ: 300 Sets / Color

SIZE: US S - XXL [View More](#)



**SMT260302**  
Linear Gradient Surf Shorts

Fabric: 100% Polyester  
MOQ: 300 Sets / Color

SIZE: US S - XXL [View More](#)



**SMT260303**  
Solid Utility Board Shorts

Fabric: 100% Polyester  
MOQ: 300 Sets / Color

SIZE: US S - XXL [View More](#)



**SMT260304**  
Palm Silhouette Gradient Trunks

Fabric: 100% Polyester  
MOQ: 300 Sets / Color

SIZE: US S - XXL [View More](#)



**SMT260305**  
All-Over Shark Print Trunks

Fabric: 100% Polyester  
MOQ: 300 Sets / Color

SIZE: US S - XXL [View More](#)



**SMT260306**  
Linear Stripe Faded Trunks

Fabric: 100% Polyester  
MOQ: 300 Sets / Color

SIZE: US S - XXL [View More](#)



## WHERE VISION MEETS REALITY

Our comprehensive material library offers everything from classic performance blends to sustainable textiles and specialized textures. Whether you require metallic sheens or ribbed finishes, we provide the perfect fabric foundation to bring your design vision to life.

Utilizing advanced digital and heat transfer technology, we deliver high-fidelity printing solutions for any concept. From intricate placement designs to seamless all-over patterns, our expertise ensures vibrant colors and flawless execution on every fabric.

Every detail is perfected through our strategic sourcing of premium trims and accessories. We provide tailor-made solutions for everything from specialized elastics to bespoke metal hardware, ensuring your products are finished with high-quality and cost-effective precision.

Enhance your brand identity with fully customized packaging and labeling solutions. We ensure each garment is professionally packed and retail-ready, creating a premium unboxing experience that streamlines your journey from production to the final consumer.

## GET IN TOUCH!

### Location

10-8A, Tiexi Rd., Ningyuan St.,  
Xingcheng, LiaoNing, China

### Web

WEARHONGXIU.COM  
YISWIM.COM

### Contact

+86 177-1101-4152  
service@wearhongxiu.com

### Social Media

LinkedIn / Facebook / Tiktok  
@wearhongxiu

